

W-9 Service Paging System
Operation and Installation Guide



How to operate the W-9 Wireless paging system

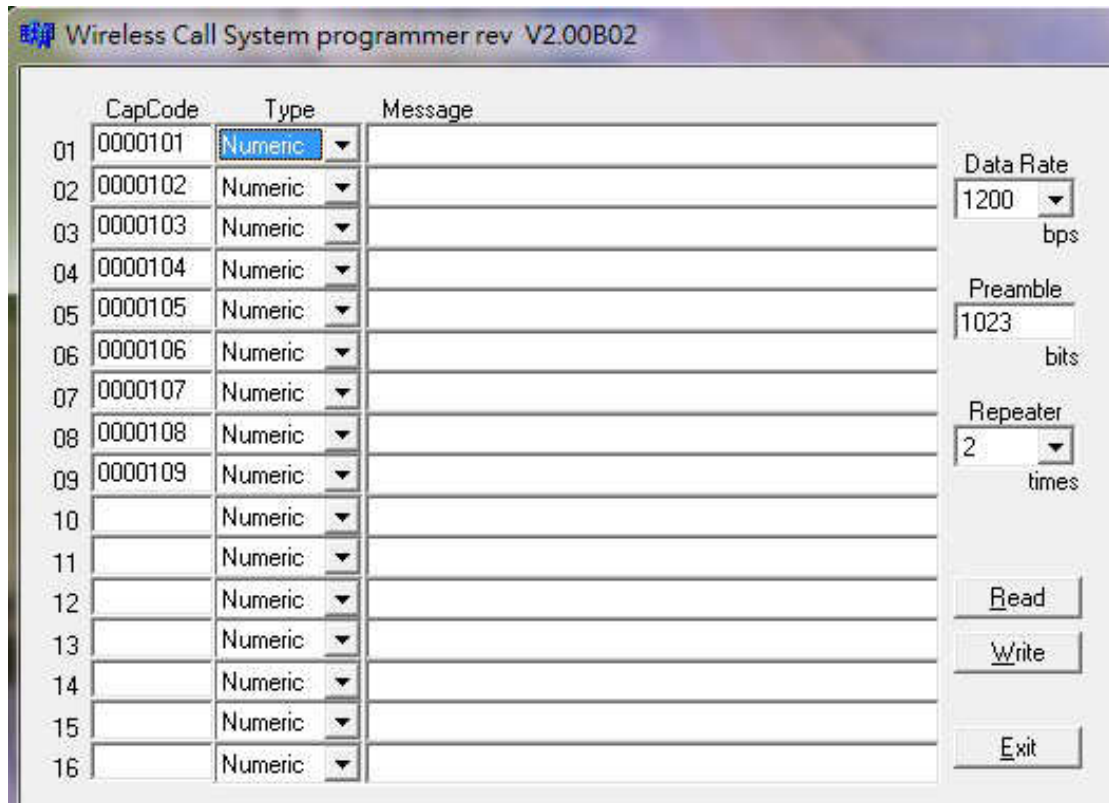


1. Depress the Number button to page the designated guest.
2. The LED will be lighted on during the paging period.

How to set up the programming parameters

1. Install the M Series AP execution file and then run the programming software.
2. Turn off the Power Switch located at the back case side.
3. Connect the USB plug into the W-9 USB port

Example Programming Screen as below



1. Pager No

For W-9 unit, please just enter the Pager No.1-9 row. The rest of Pager No.10-16 will not work at all. And this same software is also used for our 16 buttons M-916K paging device.

2. Cap code

This is the 7 digits pager address. And it must be same as the used receiving pager.

3. Tone Alert

This is the pager's tone alert function.(not function for Q-5 Donuts pagers)

A = 1 sound per 1 Sec, B = 2 sound per 1 sec, C = 3 sound per 1 sec, D= 4 sound par 1 sec.

If pager is an alphanumeric pager, Then please set on "D" feature.

4. Message type. (Not function for Q-5 Donuts pager)

Please set the same type message with your used numeric or alphanumeric pager.

5. Send Message. (Not function for Q-5 Donuts pager)

This is for the receiving message usage depend on the type of the numeric or alphanumeric pager used.

6. Date rate

This should also be set on the same speed data with the used Pagers
And the baud rate are in 512bps or 1200bps or 2400bps types.

7. Preamble

Please set this function at the 600 bits above. And it might not work properly under the 576 bits.

8. Repeater

This is for the same 1-4 times repeat message set-up with a single Red button depressing.

How to Charging with Q-5 donut pagers

